



ECCO: November 2016



In this edition:

AGM: Report and Accounts

Cinderella

Christmas Party – 9 December

Committee & ECC News

Future Productions & Forthcoming Events

Play Readings

The Government Inspector

If you have any contributions for ECCO, please send them to Janet at

ecco@ecc.theatreinbrussels.com

The next Ecco will come out January 2017

Deadline: 15 December

Message from the Chair

You will find further on in this month's ECCO the report on the 2015-16 Season which I gave at our recent AGM: so there is already rather a lot from me in this edition!

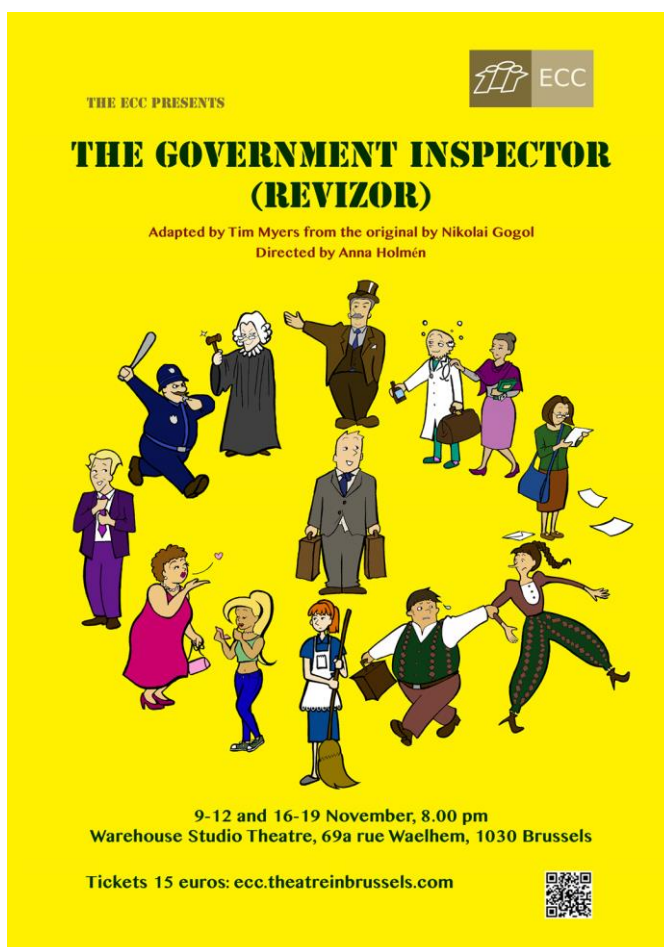
However, I would like to take this opportunity to welcome Anna, Bryony and Steve on to our committee, and I am looking forward to working alongside them in the coming year.

At the time of writing our next production, *The Government Inspector*, is almost sold out - so if you want to see it and have missed out some of you might want to try clicking on the Facebook link on the left and leaving a message that you are looking for tickets.

I hope to see many of you at our celebration on Friday 9 December, and take this opportunity to send you all my best wishes for Christmas and 2017.

Lyn Wainwright
ECC Chair

chair@ecc.theatreinbrussels.com



Click on the image left to go directly to the box office.

Most Nights Already SOLD OUT

The Government Inspector

9-12 & 16-19 November 2016

8pm

The Warehouse Studio Theatre

Tickets: <https://thelittleboxoffice.com/ecc>

Director Anna Holmén writes:

A Russian play directed by a Swede? That has got to be dark and gloomy, I hear you say. Far from it, dear audience, far from it! *The Government Inspector* is one of the funniest plays ever written, and that is not just my opinion. If you have seen the Fawlty Towers episode *The Hotel Inspectors*, you will have a fair idea of the basic plot. A small and fantastically corrupt town is expecting an inspector from the capital. Rumour has it that an official staying at the inn is the inspector, everybody panics and the mix-up leads to one farcical situation after another.

We have updated the Russian classic and set it somewhere in the EU. The inspector now comes from Brussels and the original satire has been spiced up with a good dose of Panto-inspired humour. Extra points if you can guess which lines are from the original translation of Nikolai Gogol and which lines are Tim Myers' own.

The theme of the play is serious though. Gogol wrote it to condemn and ridicule human greed and political corruption, both acutely topical issues. To be able to fight evil with laughter is one of the human mind's greatest strengths, and I hope this production can both entertain and spark debate. Thanks to the dedication of my talented cast and skilful crew, I have had the best support possible in reaching for these goals. We hope we have achieved them. Come and see the play, and judge for yourself.

The Government Inspector: Rehearsals



Cinderella

Friday 13 January 2017 - 20:00

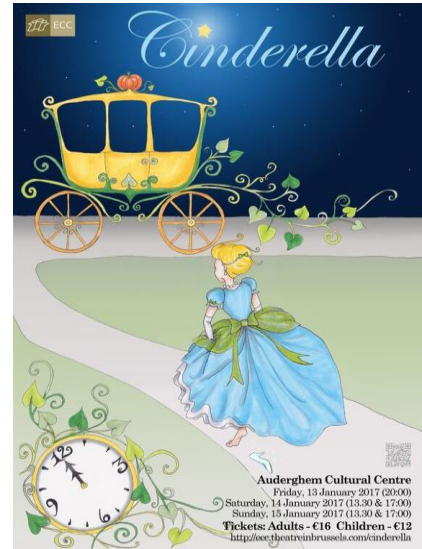
**Saturday 14 and Sunday 15 January 2017
13:30 & 17:00**

Tickets €16 / €12

**Auderghem Cultural Centre
Bvd du Souverain 183, 1160 Brussels**

Countdown to the Royal Ball:

2 months to go!



Click on the poster above to go directly to the Box Office!

Director Cath Howdle writes:

With two months before the palace doors open on the royal ball, rehearsals are now full steam ahead!



The show is now blocked, with the cast participating in sectional rehearsals to maximise the amount of time they spend practising and performing when they volunteer to give up an evening to rehearse. As director, my tracker spreadsheet is going from ominous red squares - indicating that a scene has not left the starting line - to pleasanter shades of orange and yellow.

Our awesome cast have put in lots of hard work, putting their own interpretations on the characters they're beginning to inhabit. One or two people are even starting to come off-book, which always gives a boost to everyone else to get those lines learned and scripts down!





Of course, in panto one of the main reasons for learning lines quickly is because once they are thoroughly learned, you are allowed to gleefully abandon the script in order to do a couple of minutes of ad libbing! And the queens of the ad lib are of course Cinderella's horrible step sisters - who this month tried on their heels for the first time and did some serious vamping!

And it's not just the principals who are coming on in leaps and bounds - the chorus are putting in a huge amount of effort, led by our brilliant choreographer Josephine. And as the show preparation goes on I'm always amazed at the creative skills we have in the cast - two cast members have choreographed one of the baddies' numbers, and numerous chorus have brought ballet skills, cartwheels and even solo singing to the smorgasbord of talent that makes up the panto gang.

So, at 2 months before the Royal Ball, rehearsals are going pretty well! Watch this space for more updates, and if you'd like to come and see the show, the box office is now open and tickets for the best seats are selling fast: <http://ecc.theatreinbrussels.com/cinderella>.



ECC NEWS

A new committee was elected at the AGM, further roles will be allocated after our first committee meeting, but, in the meantime, we are delighted to welcome Anna, Bryony and Steve.

Committee

Lyn Wainwright
Kerry Lydon
Fiona McGinnis
Sara Hammerton
Anna Holmén
Andy Ing
Janet Middleton
Boff Muir
Steve O'Byrne
Bryony Ulyett

Role

Chair
Secretary
Treasurer

Contact us at:

chair@ecc.theatreinbrussels.com
secretary@ecc.theatreinbrussels.com
treasurer@ecc.theatreinbrussels.com
sara@ecc.theatreinbrussels.com

feats@ecc.theatreinbrussels.com
ecco@ecc.theatreinbrussels.com
boff@ecc.theatreinbrussels.com

AGM: Report

Many thanks to those of you who attended our AGM, and for those of you who were unable to attend, here's a summary of the most important points!

Our Chair, Lyn Wainwright, gave her report:

Our first production in January 2016 was a new original Pantomime telling the story of Dick Whittington. It was once again created by an in-house team of writers who continue to supply an endless stream of very bad jokes and improbable characters which keeps the laughter flowing. As we have now come to expect the Show was a great success and it will not come as a surprise to any of you to know that 'Cinderella' is already cast and well into production for January 2017. Last year I reported that because of the rotating ACTS Calendar it was unlikely that the ECC would be able to offer a Pantomime every year as we would not always have a suitable time slot. Clearly I had underestimated the determination of the Panto team as they quickly pointed out that none of the other members of ACTS would be mad enough to put on a Show in the first two weeks of January and consequently there was no clash and no opposition. I hesitate to predict what will happen in 2018.

The big event for 2016 was always going to be FEATS (Festival of European Anglophone Theatrical Societies) as it was our turn to host the festival in Brussels. However, we still had a March slot to fill and with no ECC FEATS 2016 entry to worry about we decided that we would make it into an opportunity for actors and crew to try their hand at something new. Crew members were encouraged to act, actors who had given up acting because of the difficulty of remembering the lines were encouraged to find creative ways to overcome this and actors who had never attempted anything technical were encouraged to do so. It was, however, decided that the role of Director should be performed by someone with suitable experience. Janet Middleton boldly leapt into the unknown and offered to direct 'The Real Inspector Hound' and Hugh Dow offered to warm the evening up with a production of 'Dinner for One' and thus 'Dinner Before death' was born.

In the event it proved more difficult than anticipated to fulfil all our objectives but we certainly recruited a lot of new faces and several of our more familiar faces were seen in unfamiliar roles. Credit must go to both Janet and Hugh for pulling off such a challenging event and making it so enjoyable for all those involved. Hats off to Janet in particular for having to cope with the temporary absence of one of her cast for the Tech, Dress and the first half of the run. Carlos Casorran learnt the lines and played the part at the very last minute and somehow managed to make it look very easy for which we are all extremely grateful. This was not his first time on stage of course, but standing in was a first in a different kind of way and very much in the spirit of the evening.

Malinda Coleman is also to be congratulated for running a very successful Make-up Workshop in early February which meant that we had willing and able recruits for 'Dinner Before Death'

Then came FEATS. Eileen Sutton and her team worked tirelessly during the months leading up to May but the pressure only arrived during the long hours of the Festival itself. Everyone involved should be congratulated on an excellent result. Over the years the ECC has earned a reputation for hosting a good Festival and so expectations were high but judging by the very positive feedback received our reputation is intact.

Play readings have continued throughout the year and as always our thanks go to Barbara Blackwell and Mary Pritchard for hosting so many of the events. This year we have held a couple of Quiz evenings in the Warehouse during which Adam Brown, Kerry Lydon and Michelle Vanderstraaten tested our knowledge or lack of it. These Social evenings are very popular and so our thanks go to the organisers.

There has been much discussion this season about the need for a Youth Theatre. It was proposed that the Warehouse and Studio Theatre could be made available under the ECC umbrella and that a suitable leader should be found who would be paid for their expertise but that the project would be self-funding. In order to 'test the waters' it was proposed that a Youth Theatre Workshop should be organised at the beginning of July 2016 under the leadership of Gordon Wilson. Unfortunately, due to an already busy season and the failure to get things organised sufficiently early this proved to be a step too far since it did not generate the necessary interest. However, we plan to revive the idea in 2017 and hope to have something in place next summer.

Our autumn production 2016, directed by Anna Holmen, will be 'The Government Inspector' which will be performed 9th – 19th November 2016. Not strictly part of this season but almost. Those of us not directly involved are looking forward to it enormously. We have recently been invited to participate in FEATS 2017 in Frankfurt and our entry will be 'A Woman of No Importance' directed by Conrad Toft. Other future productions include 'The Impotence of Being Frank' to be directed by Adam Brown and 'Amadeus' to be directed by Steve Challens

Finally let me thank all the members of the Committee for their hard work throughout the year and in particular I should like to express our gratitude to Martin Blackwell who is standing down as Treasurer after his allotted three year stint.

Martin Blackwell presented the annual accounts, which are on the following pages.



In addition, the ECC is delighted to have once again made a charitable donation from the year's excess income. This year €1,000 was paid to the British Charitable Fund which supports anyone with a connection to Britain who finds themselves in need. For further details please see <http://www.bcfund.be/about-bcf/what-we-do>

ECC ACCOUNTS at 31 JULY 2015 & 2016

BALANCE SHEETS AT JULY 31

General Fund

Balance at beginning of the year	55,405.89	56,489.22
Surplus/ Deficit for the year	1,083.33	(3,057.41)
Balance at end of the year	56,489.22	53,431.81

Warehouse Fund

49,500.00	49,500.00
------------------	------------------

TOTAL FUNDS at July 31

105,989.22	102,931.81
-------------------	-------------------

Share of CAST assets	49,500.00	49,500.00
----------------------	------------------	------------------

CURRENT ASSETS

ING current account	1,531.98	1,208.37
ING FEATS 2016 current account	0.00	6,411.44
ING deposit account	48,739.83	45,681.18
PayPal account	619.63	87.65
Warehouse operating expenses prepaid	1,333.33	1,333.33
Stock merchandise for future pantos	0.00	802.57
June 2016 social event income to receive	50.00	174.18
Mrs Klein rights prepaid	560.00	0.00
FEATS 2016 theatre prepayment	5,700.00	0.00
FEATS 2016 expenses prepaid	73.00	0.00

CURRENT LIABILITIES

Government Inspector advance sales	0.00	(60.00)
Dick Whittington & FEATS 2016 SABAM fee due	0.00	(386.91)
2013 & 2014 Tax & filing costs	(720.00)	(820.00)
Donations	(1,000.00)	(1,000.00)
Mrs Klein net advance sales	(189.47)	0.00
Dick Whittington net advance sales	(209.08)	0.00

NET CURRENT ASSETS	56,489.22	53,431.81
---------------------------	------------------	------------------

TOTAL ASSETS AT JULY 31

105,989.22	102,931.81
-------------------	-------------------

The accounts are prepared on a cash basis except for show income & expenses, which are accrued to ensure a show's results are shown in the financial year in which it took place, & accruals for warehouse operating expenses, tax & filing costs & donations.

ACCOUNTS at 31 JULY 2015 & 2016

INCOME & EXPENDITURE ACCOUNTS

For the years ended July 31

Income

Net proceeds from public performances	10,541.87	12,381.13
FEATS 2016 surplus	0.00	6,095.01
Social events & workshop surplus		149.37
Interest	312.22	85.93

TOTAL INCOME

10,854.09 18,711.44

Expenditure

Warehouse and operating expenses	8,255.15	8,000.0
Warehouse repairs	0.00	12,000.00
Insurance	0.00	267.90
Tax & filing costs	343.80	395.30
Sundry costs	39.32	0.80
Bank Charges	132.49	104.85
Donations	1,000.00	1,000.00

TOTAL EXPENDITURE

9,770.76 21,768.85

Surplus/**Deficit** for the year

1,083.33 3,057.41

NET PROCEEDS FROM PERFORMANCES

	2014/15	2015/16
MRS KLEIN		2,648.46
DICK WHITTINGTON		5,752.62
DINNER BEFORE DEATH		3,980.05
TALKING HEADS	2,818.99	
ALADDIN	5,481.17	
TOM & VIV	2,408.64	
WAR BRIDES	-166.93	
	10,541.87	12,381.13

A donation of 1000€ agreed at the 2015 AGM was made to vzw Serve the City asbl in the year ended July 31, 2016

Social Event



**Friday 9th December
8pm**

**The Bar Room
The Warehouse, Rue Waelhem 69a, 1030 Brussels**

ECC Christmas Party

Or, OUR THANK YOU

to everyone who has helped and supported us this year

Our special thanks go to everyone who helped out with FEATS 2016

To register that you will be joining us, click on Santa!



Wishing You a Merry Christmas



A Very Happy 2017

Monthly Play Readings

Wednesday 2 November

Graham Andrews will lead us in reading

Philip Pullman's adaptation of Mary Shelley's

FRANKENSTEIN

We will meet Chez Barbara: rue Louis Hymans 20, Ixelles 1050

Graham writes:

Frankenstein is now generally seen as the first science-fiction novel ever written. There is nothing supernatural about how Doctor - not Baron! - Frankenstein creates life from 'galvanizing' recently dead bodies. In the early 19th century, electricity was at the cutting edge of scientific research. The so-called 'Monster' has often been confused with Frankenstein himself, who - it could be argued - is much more monstrous than his remarkably civilized creation. Peter Cushing played it that way in *The Curse of Frankenstein* and its many sequels, made by Hammer Films. Christopher Lee was Hammer's original patchwork man, and he brought a great sensitivity to the sadly under-written role.

If you intend to join us please register via Doodle by clicking [Here](#)

Or ring Mary on 02 345 8583.

For those of you who are new to the play reading group, we meet at 7.45pm aiming to start reading at 8. We have drinks and nibbles, and a small contribution in the form of a bottle or something to eat is always welcome!

Although Mary and Barbara are still very much our guiding lights, Mary is no longer ringing around to remind people. However, every month Janet emails a reminder to people who have attended in the past and wish to be on the mailing list for these reminders. If you would like to be added to the ECC Play Reading Email List, please email Janet at ecco@ecc.theatreinbrussels.com

How to Doodle: All you have to do is click on the link above, add your name to the list under 'Table View', click in the box to show you are coming (or do nothing if you're not!) and then 'Save' your entry. If you have any problem with this, please do not hesitate to contact Janet - or simply ring Mary.



The Christmas play reading will be on 7 December



FORTHCOMING PRODUCTIONS/EVENTS

ECC	<i>The Government Inspector</i> 9-12 & 16-19 November
ETC	<i>The Little Prince</i> (Opera Magique) by Rachel Portman based on the book by St Exupéry 9-20 November
BLOC	<i>A Christmas Carol</i> – The musical by Alan Menken 24-27 November
ECC	<i>Cinderella</i> 13-15 January
BSS	<i>The Winter's Tale</i> 23-28 January
ITG	<i>The Cripple of Inishmaan</i> by Martin McDonagh 7-11 February
ATC	<i>The Crucible</i> by Arthur Miller March
ECC	<i>A Wilde Evening</i> 23-27 May
BLOC	Spring Show 1-4 June
ATC	Cafe Theatre 13-17 June

Click on the name of the theatre group above to go directly to their website.
For more information and auditions see also www.theatreinbrussels.com

YOU MIGHT ALSO BE INTERESTED IN:

KVS has regular productions surtitled in English. Visit their website to find out more: <http://www.kvs.be/en>

Fun, Food & Acting: Once a month a unique presentation at Theatre de la Toison D'Or: <http://www.ffact.be/#>

Continued on next page

LIVE TRANSMISSIONS FROM LONDON (or repeats!)

Kinepolis, Brussels: [Click here for further details](#)

Utopolis, Mechelen: [Click here for further details](#)

10 November Kinepolis	<i>Deep Blue Sea</i> NTLive
15 November Kinepolis	<i>Hamlet</i> NTLive, Benedict Cumberbatch Version
17 November Utopolis	<i>Hamlet</i> NTLive, Benedict Cumberbatch Version
29 November Kinepolis	<i>The Entertainer</i> The Kenneth Branagh Theatre Co.
6 December Kinepolis	<i>War Horse</i> NTLive
8 December Utopolis	<i>War Horse</i> NTLive
15 December Utopolis	<i>No Man's Land</i> NTLive
16 February Utopolis	<i>St. Joan</i> NTLive
9 March Utopolis	<i>Hedda Gabler</i> NTLive